

SERVICE PROGRAM

SP 8-662-001



July 2008

ATTENTION:	SERVICE MANAGERS / PARTS MANAGERS
SUBJECT:	CAB LATCH BRACKET BRACING
VEHICLES AFFECTED:	All WX42 and WX64, MY07 and MY08
EXPIRATION DATE:	1 AUGUST 2009

SERVICE PROGRAM INFORMATION:

This Service Program is a product modification that Autocar recommends be performed on all affected vehicles. The expense related to this Service Program will be reimbursed based on standard labor time and required parts. Claims submitted after the expiration date of the Service Program will not be reimbursed.

Autocar has identified a potential issue with cab latch brackets being overstressed causing cracking. As a proactive customer support measure, Autocar is implementing this Service Program to add bracing to better support the cab latch bracket assembly.

VEHICLES AFFECTED:

Vehicles with serial numbers in the range 204528 to 208193 are affected. See the VIN list starting on page 9. In addition, to determine whether a vehicle is affected by this Service Program, consult the Service/Warranty screen on www.autocartruck.com. Enter the VIN into the VIN Profile. Outstanding service programs and recalls will be displayed. If this Service Program number does not appear in the VIN Profile, then the vehicle is not affected. If the Service Program has already been completed on the vehicle, the Service Program number will have "COMPLETED" after it.

INSPECTION: None required.

TIME ALLOWANCE: Repair: 2 hours per vehicle

PARTS REQUIRED:

A6620087-001	Bracket, univ cab latch, WX	1
A6620088-001	Brace, cab latch RH, WX	1
A6620088-002	Brace, cab latch LH, WX1	1
A6620089-001	Plate, nut	1
BOM-R10-6	Huck Rivet	10
	Bolt, Flg 3/8-16 x 1.25" LG GR8	6
	Nut, Flg 3/8-16 GRG	6

AC SP 662-0807-001

SERVICE PROGRAM

SP 8-662-001



July 2008

If flanged fasteners are not available, bolts and nuts of the appropriate specification can be used in conjunction with hardened washers, suitable to the application. To determine which bolts to use, please see the "Repair Procedure" section below.

TOOLS REQUIRED:

Impact Gun	3/4" Impact Gun Socket
Portable Right Angle Drill	7/16" Drill Bit
11/32" Drill Bit	Step Stool
Battery Impact	9/16" Battery Impact Socket
9/16" Wrench	Short Grease Pencil
Torque Wrench	Huck Rivet Gun

CLAIMS FOR REIMBURSEMENT:

Submit a claim following published instructions in the claim preparation section of the Service Operations Manual.

CLAIM CODING INFORMATION:

Authorization Number: 81806-2-01
Repair: 2 hours per vehicle
Expiration Date: 8/31/09

DEALER RESPONSIBILITY:

Dealers must perform this Service Program on all affected vehicles at no charge to the owner regardless of mileage, age of vehicle or ownership prior to the expiration date of this Service Program. If a vehicle affected by this Service Program is taken into or is in your vehicle inventory or at your dealership for service, you must perform this Service Program before the vehicle is sold or released to the owner.

SERVICE PROGRAM

SP 8-662-001



July 2008

REPAIR PROCEDURE – OVERVIEW / NOTES:

WARNING

To prevent eye injury, always wear eye protection when performing vehicle maintenance, service or inspection.

DANGER

Before working on a vehicle, set the parking brake, place the transmission in neutral and block the wheels. Failure to do so can result in unexpected vehicle movement and can cause serious personal injury or death.

DANGER

The 3/8" and 1/2" bolts and nuts must be accurately torqued. These fasteners secure structural components on the truck. If these fasteners are not secured properly, there is a risk of failure of the components or fasteners, which could result in further structural failure, which could result in serious personal injury or death.

1. Follow the safety instructions above, and ensure the engine is switched off.
2. Identify the bolts that secure cab latch brackets and braces to each other and to the cab. Refer to diagrams of different suspension configurations below.
3. Use torque tools set as follows to perform the torque operations:
 - a. BRACKET UNIVERSAL CAB LATCH to cab latch mountings (3/8-16 GR8 Screw & Grade G nuts): 44 – 52 lb.ft
 - b. BRACE CAB LATCH to BRACKET UNIVERSAL CAB LATCH (3/8-16 GR8 Screw & weld nuts with Loctite 242 or 243): 31 - 37 lb.ft
 - c. Use a permanent paint marker to mark the bolts after applying the correct torque.
4. This Service Program is complete after all bolts are torqued as instructed.

REPAIR PROCEDURE – DETAILED:

Step 1. Raise the cab

SERVICE PROGRAM

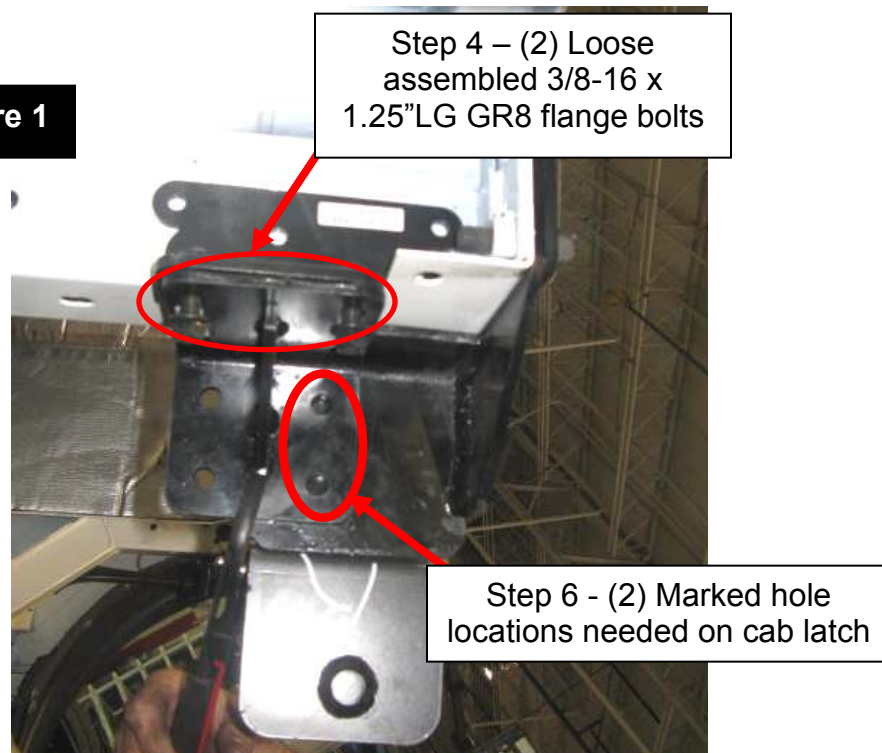
SP 8-662-001



July 2008

- Step 2. Retrieve step stool for access to cab latch brackets
- Step 3. Move tools and step stool to LH side of cab.
- Step 4. Loose assemble A6620088-001 cab latch brace and A6620087-001 univ cab latch bracket together with (2) 3/8-16 x 1.25"LG GR8 flange bolts and (2) 3/8-16 GRG flange nuts. Reference Figure 1 for fastener locations.
- Step 5. Position A6620088-001 cab latch brace and A6620087-001 univ cab latch brackets in position against cab support and cab latch bracket.
- Step 6. Mark outline of (2) holes in A6620087-001 univ cab latch bracket onto cab latch bracket with marking pencil. Reference Figure 1 for marked hole locations.

Figure 1



- Step 7. Remove A6620088-001 cab latch brace and A6620087-001 univ cab latch brackets from cab.
- Step 8. Drill out (2) marked holes in cab latch bracket using drill and 7/16" drill bit.

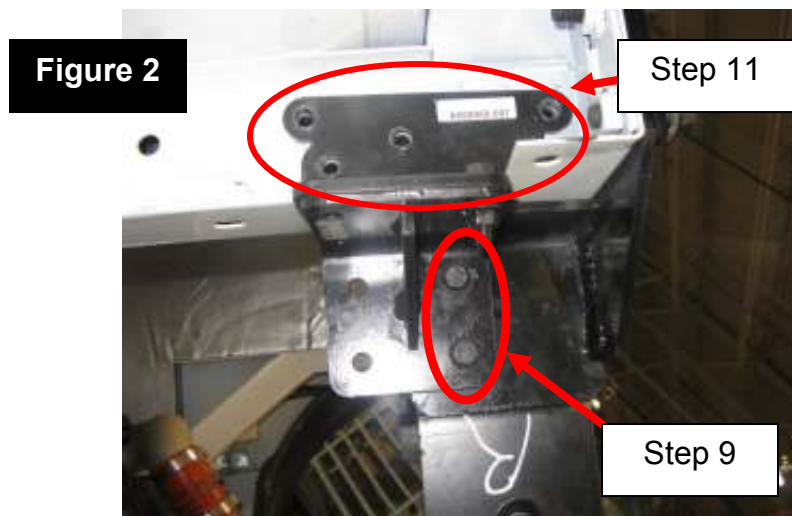
SERVICE PROGRAM

SP 8-662-001



July 2008

- Step 9. Install A6620088-001 cab latch brace and A6620087-001 univ cab latch brackets to (2) drilled holes on cab latch with (2) 3/8-16 x 1.25" LG GR 8 flange bolts and (2) 3/8"-16 GRG nuts. Tighten bolts with battery impact, 9/16" battery impact socket and 9/16" socket. Torque bolts to 44-52 lb.ft with torque wrench, 9/16" socket, and 9/16" wrench. Reference Figure 2 for hole locations.
- Step 10. Tighten (2) previously installed 3/8-16 x 1.25" LG GR 8 flange bolts and nuts to secure A6620088-001 cab latch brace and A6620087-001 univ cab latch brackets together with battery impact, 9/16" battery impact socket, and 9/16" wrench. Torque bolts to 44-52 lb.ft with torque wrench, 9/16" socket, and 9/16" wrench. Reference Figure 3 for bolt locations.
- Step 11. Drill (5) holes in LH cab support with drill and 11/32" drill bit using holes in A6620088-001 cab latch brace as guide for hole locations. Drill through only the outside wall of the cab support. Obstructions for drilling include the 1/2-13 fasteners on the cab latch and the location of the horn. Remove and replace fasteners as needed to gain proper access for hole drilling. Reference Figure 2 for locations of drilled holes.



- Step 12. Install (5) B0M-R10-6 rivets to secure A6620088-001 cab latch brace to cab support with huck rivet gun. Place threaded end of rivet into gun. Position rivet into drilled hole and pull trigger on rivet gun. The rivet should secure in place and the threaded end of the rivet should break off.

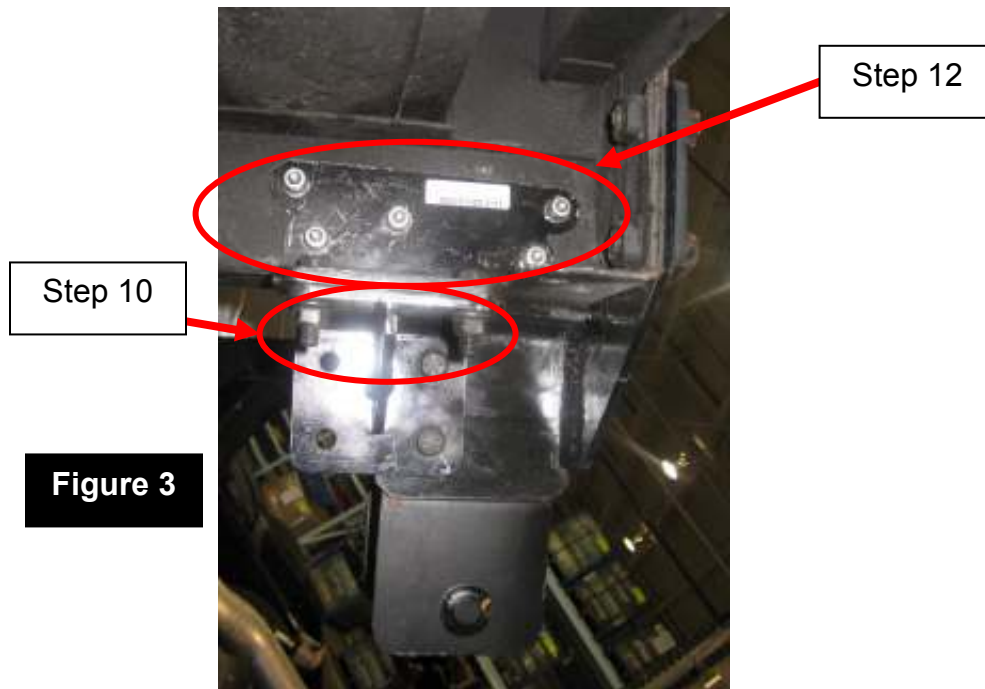
SERVICE PROGRAM

SP 8-662-001



July 2008

The gun may have to be cycled twice to break off rivet end. Reference Figure 3 showing bracket riveted in place.



- Step 13. Move tools and step stool to RH side of cab.
- Step 14. Compare LH side cab latch bracket to pictures below to determine if the LH bracket is Bracket A or Bracket B.

SERVICE PROGRAM

SP 8-662-001



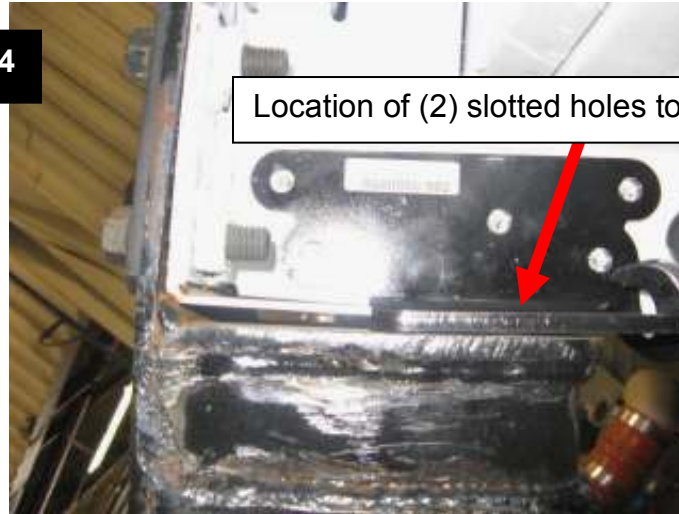
July 2008



- Step 15. If cab bracket is the same as Bracket A, repeat Steps 4-12 for the RH side as the process will be the same as LH side except mirror image. Use A6620088-002 cab latch brace and A6620087-001 univ cab latch brackets and follow same process steps as LH side. If the cab bracket is the same as Bracket B, proceed to step 16 to complete the brace installation for the RH side cab bracket.
- Step 16. Place A6620088-002 RH cab latch brace in position against cab support and RH cab latch bracket as shown in Figure 4.

July 2008

Figure 4



- Step 17. Mark outline of (2) slots in A6620088-002 brace onto cab latch bracket with marking pencil. Using impact gun and $\frac{3}{4}$ " socket, remove cab latch assembly from cab by removing (4) $\frac{1}{2}$ "-13 bolts. See Figure 5 for marked slots and cab latch bracket removed from cab.

Figure 5



- Step 18. Drill out (2) marked slots in cab latch bracket using drill and $\frac{7}{16}$ " drill bit.
- Step 19. Position A6620089-001 weld nut plate inside cab latch bracket so that weld nut holes correspond with slots in cab latch bracket. Position A6620088-002 brace onto RH cab latch bracket so that weld nut plate holes, slots in cab latch bracket, and slots in RH cab brace are all in alignment. Add lock tight 242 or 243 compound to bolts and loose install

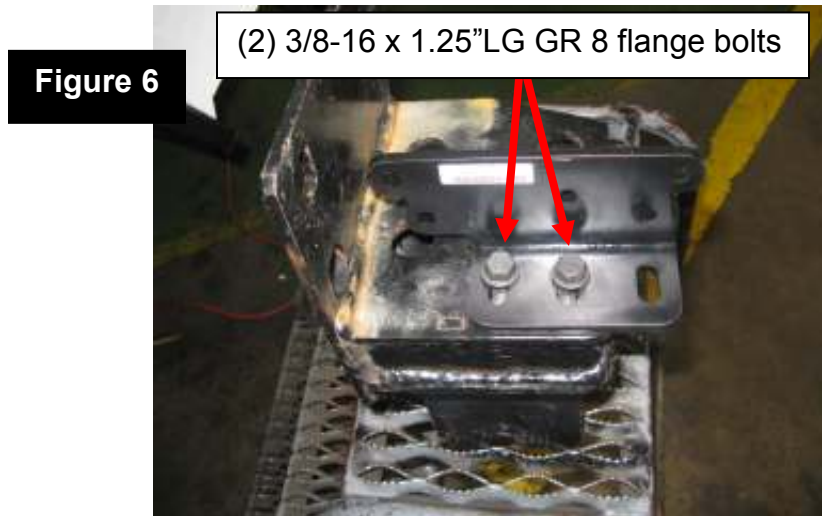
SERVICE PROGRAM

SP 8-662-001



July 2008

bolts to secure all (3) parts together using 9/16" wrench. Reference Figure 6.

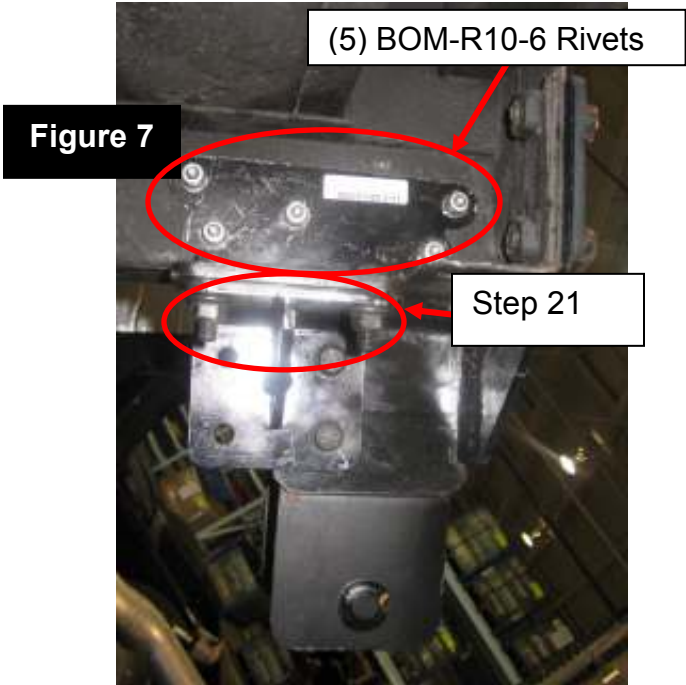


- Step 20. Reinstall RH cab latch assembly to RH back of cab weld nuts with (4) 1/2"-13 x 1.75" GR8 flange bolts. Tighten bolts with battery impact and 3/4" socket. Torque bolts to 95-115 lb.ft using torque wrench and 3/4" socket.
- Step 21. Tighten (2) previously loose installed bolts securing weld plate, cab latch bracket, and cab latch brace together with 9/16" wrench. Torque bolts to 31-37 lb.ft with torque wrench and 9/16" socket. Reference Figure 7 for bolt locations.
- Step 22. Drill (5) holes in RH cab support with drill and 11/32" drill bit using holes in A6620088-002 cab latch brace as guide for hole locations. Drill through only the outside wall of the cab support. Obstructions for drilling include the 1/2"-13 fasteners on the cab latch and the location of the horn. Remove and replace fasteners as needed to gain proper access for hole drilling.
- Step 23. Install (5) B0M-R10-6 rivets to secure A6620088-002 cab latch brace to cab support with huck rivet gun. Place threaded end of rivet into gun. Position rivet into drilled hole and pull trigger on rivet gun. The rivet should secure in place and the threaded end of the rivet should break off. The gun may have to be cycled twice to break off rivet end. Reference Figure 7 showing bracket riveted in place.

SERVICE PROGRAM SP 8-662-001



July 2008



Step 26. Remove all items from working areas and lower cab.

Step 27: On cabs with cracked welds a rust converter may be used to passivate the surface. It is advisable that the passivated surface be covered with an oil based paint, although it is not essential. One suitable rust converter product can be found at <http://www.gemplers.com/tech/mremovefaq.htm> , although other products/suppliers may be used to comply with local laws and regulations. If the through bolt fastening approach is used, the bare metal edges of the screw access hole must be surface treated with a dichromate primer or an approved product with similar corrosion inhibiting characteristics.

Affected Vehicles by VIN (sorted by last six digits of VIN, in ascending order from left to right, then top to bottom):

5VCDC6JE07H204687	5VCDC6JFX7H205192	5VCDC6JFX7H205340	5VCDC6JF17H205341
5VCDC6JF67H205321	5VCDC6JF87H205322	5VCDC6JF87H205370	5VCDC6JF17H205372
5VCDC6JF27H205400	5VCDC6JF47H205401	5VCDC6JF67H205402	5VCDC6BE28H205484
5VCDC6BE48H205485	5VCDC6BE68H205486	5VCDC6BE88H205487	5VCDC6BEX8H205488
5VCDC6BE18H205489	5VCDC6BE88H205490	5VCDC6BEX8H205491	5VCDC6BE18H205492
5VCDC6BE38H205493	5VCDC6BE58H205494	5VCDC6BE78H205495	5VCDC6BE98H205496
5VCDC6BE08H205497	5VCDC6BE28H205498	5VCDC6BE48H205499	5VCDC6MF18H205501
5VCDC6MF38H205502	5VCDC6BE28H205503	5VCDC6JF58H205506	5VCDC6RE28H205507

SERVICE PROGRAM

SP 8-662-001



July 2008

5VDC6BE18H205508	5VDC6BE38H205509	5VDC6RE28H205510	5VDC6JF48H205528
5VDC6BE88H205537	5VDC6RE68H205557	5VDC6RE88H205558	5VDC6REX8H205559
5VDC6RE68H205560	5VDC6RE88H205561	5VDC6REX8H205562	5VDC6RE18H205563
5VDC6RE38H205564	5VDC6RE58H205565	5VDC6RE78H205566	5VDC6RE98H205567
5VDC6FE78H205572	5VDC6FE98H205573	5VDC6FE08H205574	5VDC6FE28H205575
5VDC6FE48H205576	5VDC6FE68H205577	5VDC6FE88H205578	5VDC6FEX8H205579
5VDC6FE68H205580	5VDC6FE88H205581	5VDC6FEX8H205582	5VDC6FE18H205583
5VDC6FE38H205584	5VDC6FE58H205585	5VDC6FE78H205586	5VDC6FE98H205587
5VDC6FE08H205588	5VDC6FE28H205589	5VDC6FE98H205590	5VDC6FE08H205591
5VDC6FE28H205592	5VDC6FE48H205593	5VDC6FE68H205594	5VDC6FE88H205595
5VDC6FEX8H205596	5VDC6FE18H205597	5VDC6FE38H205598	5VDC6FE58H205599
5VDC6REX8H205609	5VDC6RE68H205610	5VDC6RE88H205611	5VDC6REX8H205612
5VDC6RE18H205613	5VDC6JF88H205614	5VDC6JFX8H205615	5VDC6JF98H205623
5VDC6RE08H205649	5VDC6RE78H205650	5VDC6RE98H205651	5VDC6RE08H205652
5VDC6RE28H205653	5VDC6JF98H205654	5VDC6JF28H205656	5VDC6JF48H205657
5VDC6JF68H205658	5VDC6JF88H205659	5VDC6JF48H205660	5VDC6JF68H205661
5VDC6JF88H205662	5VDC6JFX8H205663	5VDC6JF18H205664	5VDC6JF38H205665
5VDC6JF58H205666	5VDC6JF98H205668	5VDC6JF08H205669	5VDC6JF78H205670
5VDC6JF98H205671	5VDC6JF08H205672	5VDC6JF28H205673	5VDC6JF48H205674
5VDC6JF68H205675	5VDC6JF88H205676	5VDC6JF28H205687	5VDC6JF48H205688
5VDC6HF98H205689	5VCD36PE48H205690	5VDC6JF48H205691	5VDC6JF98H205704
5VDC6JF48H205707	5VDC6REX8H205710	5VDC6JF68H205711	5VDC6HE18H205712
5VDC6HE38H205713	5VCD36PE58H205715	5VDC6BE58H205723	5VDC6BE78H205724
5VDC6BE98H205725	5VDC6BE08H205726	5VDC6BE28H205727	5VDC6BE48H205728
5VDC6BE68H205729	5VDC6BE28H205730	5VDC6BE48H205731	5VDC6BE68H205732
5VDC6BE88H205733	5VDC6BEX8H205734	5VDC6BE18H205735	5VDC6BE38H205736
5VDC6BE58H205737	5VDC6BE78H205738	5VDC6BE98H205739	5VDC6BE58H205740
5VDC6BE78H205741	5VDC6BE98H205742	5VDC6BE08H205743	5VDC6BE28H205744
5VDC6BE48H205745	5VDC6BE68H205746	5VDC6BE88H205747	5VDC6BEX8H205748
5VDC6BE18H205749	5VDC6BE88H205750	5VDC6BEX8H205751	5VDC6BE18H205752
5VDC6BE38H205753	5VDC6BE58H205754	5VDC6BE78H205755	5VCD36PE08H205766
5VCD36PE28H205767	5VCD36PE48H205768	5VCD36PE68H205769	5VCD36PE28H205770
5VCD36PE48H205771	5VCD36PE68H205772	5VCD36PE88H205773	5VCD36PEX8H205774
5VCD36PE18H205775	5VCD36PE38H205776	5VCD36PE58H205777	5VCD36PE78H205778
5VCD36PE98H205779	5VCD36PE58H205780	5VCD36PE78H205781	5VCD36PE98H205782
5VCD36PE08H205783	5VCD36PE28H205784	5VCD36PE48H205785	5VDC6JF48H205786
5VDC6RE38H205807	5VDC6RE58H205808	5VDC6JFX8H205811	5VDC6JF38H205813
5VDC6JF58H205814	5VDC6JF78H205815	5VDC6JF98H205816	5VDC6JF08H205817
5VDC6JF28H205818	5VDC6JF48H205819	5VDC6JF08H205820	5VDC6JF28H205821
5VDC6JF48H205822	5VDC6JF68H205823	5VDC6JF88H205824	5VDC6JFX8H205825
5VDC6RE78H205826	5VDC6RE98H205827	5VDC6RE08H205828	5VDC6JF38H205830
5VDC6JF58H205831	5VDC6JF78H205832	5VDC6JF98H205833	5VDC6JF08H205834
5VDC6JF68H205837	5VDC6JF88H205838	5VDC6JFX8H205839	5VDC6JF88H205841
5VDC6JFX8H205842	5VDC6JF18H205843	5VDC6JF38H205844	5VDC6JF58H205845

SERVICE PROGRAM

SP 8-662-001



July 2008

5VDC6JF78H205846	5VDC6JF98H205847	5VDC6JF08H205848	5VDC6JF28H205849
5VDC6JF98H205850	5VDC6JF28H205852	5VDC6JF48H205853	5VDC6JF68H205854
5VDC6JF88H205855	5VDC6JFX8H205856	5VDC6JF18H205857	5VDC6MF98H205861
5VDC6MF08H205862	5VDC6MF28H205863	5VDC6MF48H205864	5VDC6MF68H205865
5VDC6MF88H205866	5VDC6MFX8H205867	5VDC6MF18H205868	5VDC6MF38H205869
5VDC6MFX8H205870	5VDC6MF18H205871	5VDC6MF38H205872	5VDC6MF58H205873
5VDC6MF78H205874	5VDC6MF98H205875	5VDC6MF08H205876	5VDC6MF58H205887
5VDC6MF78H205888	5VDC6JF38H205889	5VDC6MF78H205891	5VDC6MF98H205892
5VDC6JF68H205899	5VDC6JF98H205900	5VDC6JF08H205901	5VDC6JF28H205902
5VDC6JF48H205903	5VDC6JF68H205904	5VDC6JF88H205905	5VDC6JFX8H205906
5VDC6JF18H205907	5VDC6JF38H205908	5VDC6JF58H205909	5VDC6JF18H205910
5VDC6JF38H205911	5VDC6JF58H205912	5VDC6JF78H205913	5VDC6JF98H205914
5VDC6JF08H205915	5VDC6JF28H205916	5VDC6JF48H205917	5VDC6JF68H205918
5VDC6JF88H205919	5VDC6JF48H205920	5VDC6JF68H205921	5VDC6JF88H205922
5VDC6JFX8H205923	5VDC6JF18H205924	5VDC6JF38H205925	5VDC6JF58H205926
5VDC6JF78H205927	5VDC6JF98H205928	5VDC6JF08H205929	5VDC6JF68H205935
5VCD36JF78H205944	5VDC6JF18H205938	5VDC6JF38H205939	5VDC6JFX8H205940
5VDC6JF18H205941	5VDC6JF38H205942	5VDC6JF58H205943	5VDC6JF98H205945
5VDC6JF68H205952	5VDC6JF88H205953	5VDC6JFX8H205954	5VDC6JF18H205955
5VDC6JF38H205956	5VDC6JF58H205957	5VDC6JF78H205958	5VDC6JF98H205959
5VDC6JF58H205960	5VDC6JF78H205961	5VDC6LE28H205970	5VDC6LE48H205971
5VDC6LE68H205972	5VDC6LE88H205973	5VDC6LEX8H205974	5VDC6LE18H205975
5VDC6LE38H205976	5VDC6LE58H205977	5VDC6JF28H205978	5VDC6JF48H205979
5VDC6JF08H205980	5VDC6JF28H205981	5VDC6JF48H205982	5VDC6JF68H205983
5VDC6JF88H205984	5VDC6JFX8H205985	5VDC6JF18H205986	5VDC6JF38H205987
5VDC6JF58H205988	5VDC6JF78H205989	5VDC6JF38H205990	5VDC6JF58H205991
5VDC6JF78H205992	5VDC6JF98H205993	5VDC6JF08H205994	5VDC6JF28H205995
5VDC6JF48H205996	5VDC6JF68H205997	5VDC6JF88H205998	5VDC6JFX8H205999
5VDC6JF08H206000	5VDC6JF28H206001	5VDC6JF48H206002	5VDC6JF68H206003
5VDC6JF88H206004	5VDC6JFX8H206005	5VDC6JF18H206006	5VDC6JF38H206007
5VDC6JF58H206008	5VCD36RE28H206009	5VCD36RE98H206010	5VCD36RE08H206011
5VDC6RE18H206017	5VDC6RE38H206018	5VDC6RE18H206051	5VDC6JF78H206057
5VDC6JF98H206058	5VDC6JF08H206059	5VDC6JF08H206062	5VDC6JF28H206063
5VDC6JF88H206066	5VDC6JFX8H206067	5VDC6JF18H206068	5VDC6JF38H206069
5VDC6JFX8H206070	5VDC6JF18H206071	5VDC6JF38H206072	5VDC6JF58H206073
5VDC6JF78H206074	5VDC6JF98H206075	5VDC6JF08H206076	5VDC6JF28H206077
5VDC6JF48H206078	5VDC6JF68H206079	5VDC6JF28H206080	5VDC6JF48H206081
5VDC6JF88H206083	5VDC6JFX8H206084	5VDC6RE78H206085	5VDC6HE98H206090
5VDC6JF78H206091	5VDC6JF98H206092	5VDC6JF08H206093	5VDC6JF28H206094
5VDC6JF58H206266	5VDC6JF78H206267	5VDC6JF38H206329	5VDC6JFX8H206330
5VDC6JF18H206331	5VDC6JF38H206332	5VDC6JF58H206333	5VDC6JF78H206334
5VDC6JF98H206335	5VDC6JF08H206336	5VDC6JF28H206337	5VDC6KF17H205371
5VDC6KE58H205513	5VDC6KE78H205514	5VDC6KE98H205515	5VDC6KE08H205547
5VDC6KE28H205548	5VDC6KE48H205549	5VDC6KE08H205550	5VDC6KE28H205551

SERVICE PROGRAM

SP 8-662-001



July 2008

5VDC6KE48H205552	5VDC6KEX8H205569	5VDC6KE98H205627	5VDC6KF98H205667
5VDC6KF38H205714	5VDC6KFX8H205810	5VDC6KF28H205851	5VDC6KF48H205933
5VDC6KF68H205934	5VDC6KFX8H205936	5VDC6KF18H205937	5VDC6LE38H205962
5VDC6LE58H205963	5VDC6LE78H205964	5VDC6LE98H205965	5VDC6LE08H205966
5VDC6LE28H205967	5VDC6LE48H205968	5VDC6LE68H205969	5VDC6JF78H206012
5VDC6JF98H206013	5VDC6JF08H206014	5VDC6JF28H206015	5VDC6JF48H206016
5VDC6LE48H206019	5VDC6JF68H206020	5VDC6JF88H206021	5VDC6JFX8H206022
5VDC6JF18H206023	5VDC6JF38H206024	5VDC6JF58H206025	5VDC6JF78H206026
5VDC6JF98H206027	5VDC6JF08H206028	5VDC6JF28H206029	5VDC6JF08H206031
5VDC6JF28H206032	5VDC6JF48H206033	5VDC6JF68H206034	5VDC6JF88H206035
5VDC6JF38H206041	5VDC6JF58H206042	5VDC6JF78H206043	5VDC6JF98H206044
5VDC6JF08H206045	5VDC6KFX8H206052	5VDC6KF18H206053	5VDC6KF38H206054
5VDC6KF58H206055	5VDC6KF78H206056	5VDC6LE08H206101	5VDC6LE68H206099
5VDC6LE98H206100	5VDC6KF88H206082	5VDC6KF58H206086	5VDC6JF88H206102
5VDC6JFX8H206103	5VDC6JF18H206104	5VDC6JF38H206105	5VDC6JF58H206106
5VDC6RE28H206107	5VDC6JF98H206108	5VDC6JF08H206109	5VDC6JF78H206110
5VDC6JF98H206111	5VDC6JF08H206112	5VDC6JF28H206113	5VDC6JF48H206114
5VDC6KF88H206115	5VDC6KFX8H206116	5VDC6KF18H206117	5VDC6KF38H206118
5VDC6KF58H206119	5VDC6KF18H206120	5VDC6KF38H206121	5VDC6KF58H206122
5VDC6KF78H206123	5VDC6KF98H206124	5VDC6KF08H206125	5VDC6KF28H206126
5VDC6KF48H206127	5VDC6KF68H206128	5VDC6KF88H206129	5VDC6JF28H206130
5VDC6JF48H206131	5VDC6JFX8H206134	5VDC6LE68H206135	5VDC6LE88H206136
5VDC6JF58H206137	5VDC6JF78H206138	5VDC6JF98H206139	5VDC6JF58H206140
5VDC6JF78H206141	5VDC6JF98H206142	5VDC6KF18H206148	5VDC6KF38H206149
5VDC6KFX8H206150	5VDC6KF18H206151	5VDC6KF38H206152	5VDC6KF58H206153
5VDC6KF78H206154	5VDC6KF98H206155	5VDC6KF08H206156	5VDC6KF28H206157
5VDC6KF48H206158	5VDC6KF68H206159	5VDC6KF28H206160	5VDC6KF48H206161
5VDC6KF68H206162	5VDC6KF88H206163	5VDC6KE28H206165	5VDC6JF18H206166
5VDC6JF38H206167	5VDC6HE98H206168	5VDC6HE08H206169	5VDC6HE78H206170
5VDC6JF58H206171	5VDC6JF78H206172	5VDC6JF98H206173	5VDC6JF08H206174
5VDC6KF48H206175	5VDC6JF48H206176	5VDC6JF98H206187	5VDC6JF08H206188
5VDC6HE68H206189	5VDC6KF08H206190	5VDC6KF28H206191	5VDC6KF48H206192
5VDC6JF48H206193	5VDC6JF68H206194	5VDC6JF88H206195	5VDC6JFX8H206196
5VDC6JF18H206197	5VDC6JF38H206198	5VDC6JF58H206199	5VDC6JF88H206200
5VDC6JFX8H206201	5VDC6JF18H206202	5VDC6JF38H206203	5VDC6JF58H206204
5VDC6JF78H206205	5VDC6JF98H206206	5VDC6JF08H206207	5VDC6JF28H206208
5VDC6JF48H206209	5VDC6JF08H206210	5VDC6JF28H206211	5VDC6JF48H206212
5VDC6JF68H206213	5VDC6JF88H206214	5VDC6JFX8H206215	5VDC6JF18H206216
5VDC6JF38H206217	5VDC6JF58H206218	5VDC6JF78H206219	5VDC6JF38H206220
5VDC6JF68H206227	5VDC6JF88H206228	5VDC6JFX8H206229	5VDC6JF68H206230
5VDC6JF88H206231	5VDC6JFX8H206232	5VDC6JF18H206233	5VDC6LE28H206245
5VDC6LE48H206246	5VDC6HF58H206242	5VDC6HF78H206243	5VDC6HF98H206244
5VDC6KE48H206250	5VDC6KE68H206251	5VDC6KE88H206252	5VDC6KE38H206255

SERVICE PROGRAM

SP 8-662-001



July 2008

5VDC6KE58H206256	5VDC6KE78H206257	5VDC6KE98H206258	5VDC6KE08H206259
5VDC6KE78H206260	5VDC6JF98H206268	5VDC6JF08H206269	5VDC6KF98H206270
5VDC6KF08H206271	5VDC6KF28H206272	5VDC6JF28H206273	5VDC6KF68H206274
5VDC6KF38H206281	5VDC6KF58H206282	5VDC6JF58H206283	5VDC6JF78H206284
5VDC6JF98H206285	5VDC6JF08H206286	5VDC6JF28H206287	5VDC6JF48H206288
5VDC6JF68H206289	5VDC6JF28H206290	5VDC6JF48H206291	5VDC6JF68H206292
5VDC6HE18H206293	5VDC6HE38H206294	5VDC6HE58H206295	5VDC6HE78H206296
5VDC6JF58H206297	5VDC6LE18H206298	5VDC6JF98H206299	5VDC6JF18H206300
5VDC6JF38H206301	5VDC6JF58H206302	5VDC6JFX8H206313	5VDC6JF18H206314
5VDC6JF38H206315	5VDC6JF58H206316	5VDC6JF78H206317	5VDC6JF98H206318
5VDC6JF08H206319	5VDC6JF78H206320	5VDC6JF98H206321	5VDC6JF08H206322
5VDC6JF28H206323	5VDC6JF48H206324	5VDC6JF68H206325	5VDC6JF88H206326
5VDC6JFX8H206327	5VDC6LE68H206328	5VDC6KG58H206338	5VDC6JF68H206339
5VDC6JF28H206340	5VDC6JF48H206341	5VDC6JF68H206342	5VDC6JF88H206343
5VDC6JFX8H206344	5VDC6JF18H206345	5VDC6JF38H206346	5VDC6JF58H206347
5VDC6KG88H206348	5VDC6KGX8H206349	5VDC6JF58H206350	5VDC6JF78H206351
5VDC6JF98H206352	5VDC6JF08H206353	5VDC6JF28H206354	5VDC6JF48H206355
5VDC6JF68H206356	5VDC6JF88H206357	5VDC6JFX8H206358	5VDC6JF18H206359
5VDC6JF88H206360	5VDC6JFX8H206361	5VDC6HE78H206363	5VDC6JF58H206364
5VDC6JF78H206365	5VDC6JF98H206366	5VDC6JF08H206367	5VDC6JF28H206368
5VDC6JF48H206369	5VDC6LE58H206370	5VDC6LE78H206371	5VDC6LE98H206372
5VDC6JF68H206373	5VDC6KE08H206374	5VDC6KE28H206375	5VDC6KE48H206376
5VDC6KE68H206377	5VDC6KE88H206378	5VDC6KEX8H206379	5VDC6JF38H206380
5VDC6JF58H206381	5VDC6JF78H206382	5VDC6JF98H206383	5VDC6JF08H206384
5VDC6JF28H206385	5VDC6JF48H206386	5VDC6JF68H206387	5VDC6JF08H206403
5VDC6JF28H206404	5VDC6LE28H206410	5VDC6LE48H206411	5VDC6LE68H206412
5VDC6KE68H206413	5VDC6KE88H206414	5VDC6JF78H206415	5VDC6JF98H206416
5VDC6KF28H206417	5VDC6KF48H206418	5VDC6KF48H206421	5VDC6KF68H206422
5VDC6KF88H206423	5VDC6KFX8H206424	5VDC6KF18H206425	5VDC6KF38H206426
5VDC6KF58H206427	5VDC6KF78H206428	5VDC6KF98H206429	5VDC6KF58H206430
5VDC6KF78H206431	5VDC6KF98H206432	5VDC6KF08H206433	5VDC6KF28H206434
5VDC6KF48H206435	5VDC6KF68H206436	5VDC6KF88H206437	5VDC6KFX8H206438
5VDC6KF18H206439	5VDC6KF88H206440	5VDC6KFX8H206441	5VDC6KF18H206442
5VDC6KF38H206443	5VDC6KF58H206444	5VDC6KF78H206445	5VDC6KF98H206446
5VDC6KF08H206447	5VDC6KF28H206448	5VDC6KF48H206449	5VDC6KF08H206450
5VDC6KF28H206451	5VDC6KF48H206452	5VDC6KF68H206453	5VDC6KF88H206454
5VDC6JF88H206455	5VDC6JFX8H206456	5VDC6KF38H206457	5VDC6HE78H206458
5VDC6JF58H206459	5VDC6KE48H206460	5VDC6KE68H206461	5VDC6HE98H206462
5VDC6HE08H206463	5VDC6KG98H206472	5VDC6KG08H206473	5VDC6KG28H206474
5VDC6KF58H206475	5VDC6KF78H206476	5VDC6KF98H206477	5VDC6KF08H206478
5VDC6KF28H206479	5VDC6KF98H206480	5VDC6KF08H206481	5VDC6KF28H206482
5VDC6KF48H206483	5VDC6KF68H206484	5VDC6KF88H206485	5VDC6KFX8H206486
5VDC6KF18H206487	5VDC6KF38H206488	5VDC6KF58H206489	5VDC6KF18H206490

SERVICE PROGRAM

SP 8-662-001



July 2008

5VDC6KF38H206491	5VDC6KF58H206492	5VDC6KF78H206493	5VDC6LE58H206501
5VDC6LE78H206502	5VDC6LE98H206503	5VDC6KF88H206504	5VDC6KFX8H206505
5VDC6KF18H206506	5VDC6KF38H206507	5VDC6JF38H206508	5VDC6JF58H206509
5VDC6JF18H206510	5VDC6KF98H206513	5VDC6KF08H206514	5VDC6KF28H206515
5VDC6KF48H206516	5VDC6KF68H206517	5VDC6JF68H206518	5VDC6JF88H206519
5VDC6JF48H206520	5VDC6JF68H206521	5VDC6JF88H206522	5VDC6JFX8H206523
5VDC6JF28H206533	5VDC6JF48H206534	5VDC6JF68H206535	5VDC6JF88H206536
5VDC6JFX8H206537	5VDC6JF18H206538	5VDC6JF38H206539	5VDC6JFX8H206540
5VDC6JF18H206541	5VDC6JF38H206542	5VDC6JF58H206543	5VDC6JF78H206544
5VDC6JF98H206545	5VDC6JF08H206546	5VDC6JF28H206547	5VDC6JF48H206548
5VDC6JF68H206549	5VDC6JF28H206550	5VDC6JF48H206551	5VDC6JF68H206552
5VDC6KF08H206559	5VDC6JF78H206561	5VDC6JF88H206553	5VDC6JFX8H206554
5VDC6JF18H206555	5VDC6LE88H206556	5VDC6LEX8H206557	5VCD36HE98H206560
5VDC6JF98H206562	5VDC6JF08H206563	5VDC6JF28H206564	5VDC6JF48H206565
5VDC6JF68H206566	5VDC6JF88H206567	5VDC6JFX8H206568	5VDC6JF18H206569
5VDC6JF88H206570	5VDC6JFX8H206571	5VDC6JF18H206572	5VDC6JF38H206573
5VDC6JF58H206574	5VDC6JF78H206575	5VDC6JF98H206576	5VDC6JF08H206577
5VDC6JF28H206578	5VDC6JF48H206579	5VDC6JF08H206580	5VDC6JF28H206581
5VDC6JF48H206582	5VDC6JF68H206583	5VDC6JF88H206584	5VDC6JFX8H206585
5VDC6JF18H206586	5VDC6JF38H206587	5VDC6JF58H206588	5VDC6JF78H206589
5VDC6JF38H206590	5VDC6JF58H206591	5VDC6JF78H206592	5VDC6JF98H206593
5VDC6JF08H206594	5VDC6JF28H206595	5VDC6JF48H206596	5VDC6JF68H206597
5VDC6JF88H206598	5VDC6JFX8H206599	5VDC6JF28H206600	5VDC6JF48H206601
5VDC6JF68H206602	5VDC6JF88H206603	5VDC6JFX8H206604	5VDC6JF18H206605
5VCD36LEX8H206610	5VCD36LE18H206611	5VDC6JF38H206606	5VDC6KE38H206613
5VDC6JF28H206614	5VDC6KF68H206615	5VDC6KF88H206616	5VDC6KFX8H206617
5VDC6KF18H206618	5VDC6KF38H206619	5VDC6KFX8H206620	5VDC6KF18H206621
5VDC6KF38H206622	5VDC6KF58H206623	5VDC6KF78H206624	5VDC6KF98H206625
5VDC6KF08H206626	5VDC6KF28H206630	5VDC6KF48H206631	5VDC6KF68H206632
5VDC6KF88H206633	5VDC6KFX8H206634	5VDC6KF18H206635	5VDC6JF58H206638
5VDC6JF78H206639	5VDC6JF38H206640	5VDC6JF58H206641	5VDC6BE78H206646
5VDC6BE98H206647	5VDC6BE08H206648	5VDC6BE28H206649	5VDC6BE98H206650
5VDC6BE08H206651	5VDC6BE28H206652	5VDC6BE48H206653	5VDC6BE68H206654
5VDC6BE88H206655	5VDC6BEX8H206656	5VDC6BE18H206657	5VDC6BE38H206658
5VDC6BE58H206659	5VDC6BE18H206660	5VDC6BE38H206661	5VDC6BE58H206662
5VDC6BE78H206663	5VDC6BE98H206664	5VDC6BE08H206665	5VDC6BE28H206666
5VDC6BE48H206667	5VDC6BE68H206668	5VDC6BE88H206669	5VDC6BE48H206670
5VDC6BE68H206671	5VDC6BE88H206672	5VDC6BEX8H206673	5VDC6BE18H206674
5VDC6BE38H206675	5VDC6BE58H206676	5VDC6BE78H206677	5VDC6BE98H206678
5VDC6BE08H206679	5VDC6BE78H206680	5VDC6BE98H206681	5VDC6BE08H206682
5VDC6BE28H206683	5VDC6BE48H206684	5VDC6BE68H206685	5VDC6JF98H206688
5VDC6JF08H206689	5VDC6JF78H206690	5VDC6JF98H206691	5VDC6JF08H206692
5VDC6JF28H206693	5VDC6JF48H206694	5VDC6JF68H206695	5VDC6JF88H206696
5VDC6JFX8H206697	5VDC6JF18H206698	5VDC6JF38H206699	5VDC6KF88H206700

SERVICE PROGRAM

SP 8-662-001



July 2008

5VDC6JF88H206701	5VDC6JFX8H206702	5VDC6JF18H206703	5VDC6JF38H206704
5VDC6JF58H206705	5VDC6JF78H206706	5VDC6LEX8H206722	5VDC6LE18H206723
5VDC6LE38H206724	5VDC6LE58H206725	5VDC6LE78H206726	5VDC6LE98H206727
5VDC6LE08H206728	5VDC6LE28H206729	5VDC6LE98H206730	5VDC6LE08H206731
5VDC6JF98H206707	5VDC6KF68H206713	5VDC6KF88H206714	5VDC6KFX8H206715
5VDC36LE08H206745	5VDC6KF18H206750	5VDC6JF48H206811	5VDC6JF68H206812
5VDC6JF88H206813	5VDC6JFX8H206814	5VDC6JF18H206815	5VDC6JF38H206816
5VDC6JF38H206833	5VDC6JF98H206822	5VDC6JF08H206823	5VDC6LE78H206824
5VDC6LE98H206825	5VDC6LE08H206826	5VDC6LE28H206827	5VDC6LE48H206828
5VDC6LE68H206829	5VDC6KFX8H206830	5VDC6LE68H206832	5VDC6KF78H206834
5VDC6JF78H206835	5VDC6JF98H206836	5VDC6JF08H206837	5VDC6LE98H206839
5VDC6LE58H206840	5VDC36LE78H206841	5VDC6LE78H206838	5VDC6LE98H206842
5VDC6KF88H206843	5VDC6KFX8H206844	5VDC6KF18H206845	5VDC6KF38H206846
5VDC6KF18H206862	5VDC6JF18H206863	5VDC6JF38H206864	5VDC6JF58H206865
5VDC6JF78H206866	5VDC6JF98H206867	5VDC6JF08H206868	5VDC6JF28H206869
5VDC6JF98H206870	5VDC6JF08H206871	5VDC6JF28H206872	5VDC6JF48H206873
5VDC6JF68H206874	5VDC6JF88H206875	5VDC6JFX8H206876	5VDC6JF18H206880
5VDC6JF38H206881	5VDC6JF58H206882	5VDC6JF78H206883	5VDC6JF68H206888
5VDC6JF88H206889	5VDC6JF48H206890	5VDC6JF68H206891	5VDC6JF88H206892
5VDC6JFX8H206893	5VDC6JF18H206894	5VDC6KF78H206896	5VDC6LE08H206907
5VDC6LE28H206908	5VDC6LE48H206909	5VDC6JF28H206919	5VDC6JF98H206920
5VDC6JF08H206921	5VDC6JF28H206922	5VDC6JF48H206923	5VDC6JF68H206924
5VDC6JF88H206925	5VDC6JF68H206938	5VDC6JFX8H206926	5VDC6JF18H206927
5VDC6JF38H206928	5VDC6JF58H206929	5VDC6JF18H206930	5VDC6JF38H206931
5VDC6JF58H206932	5VDC6JF78H206933	5VDC6JF98H206934	5VDC6JF08H206935
5VDC6JF28H206936	5VDC6JF48H206937	5VDC6HE38H206943	5VDC6HE58H206944
5VDC6HE78H206945	5VDC6HE98H206946	5VDC6HE08H206947	5VDC6JF98H206948
5VDC6LE58H206949	5VDC6LE18H206950	5VDC6JF08H206952	5VDC6JF28H206953
5VDC6JF48H206954	5VDC6JF68H206955	5VDC6JF88H206956	5VDC6JFX8H206957
5VDC6JF18H206958	5VDC6JF38H206959	5VDC6JFX8H206960	5VDC6JF18H206961
5VDC6JF38H206962	5VDC6JF58H206963	5VDC6JF78H206964	5VDC6JF98H206965
5VDC6JF08H206966	5VDC6JF28H206967	5VDC6JF48H206968	5VDC6JF68H206969
5VDC6JF28H206970	5VDC6JFX8H206974	5VDC6JF88H206987	5VDC6JF78H206995
5VDC6JF98H206996	5VDC6JF08H206997	5VDC6JF98H207002	5VDC36LE58H207003
5VDC6LE78H207004	5VDC6LE98H207005	5VDC6LE08H207006	5VDC6LE28H207007
5VDC6LE48H207008	5VDC6LE68H207009	5VDC6JF88H207010	5VDC6JFX8H207011
5VDC6JF18H207012	5VDC6JF38H207013	5VDC6JF58H207014	5VDC6JF78H207015
5VDC6JF98H207016	5VDC6JF08H207017	5VDC6JF28H207018	5VDC6LE98H207019
5VDC6LE58H207020	5VDC6LE78H207021	5VDC6LE98H207022	5VDC6LE08H207023
5VDC6LE28H207024	5VDC6JFX8H207025	5VDC6JF18H207026	5VDC6LE88H207027
5VDC6LEX8H207028	5VDC6JF38H207030	5VDC6JF58H207031	5VDC6JF78H207032
5VDC6JF98H207033	5VDC6JF08H207034	5VDC6JF68H207037	5VDC6JF28H207035
5VDC6JF48H207036	5VDC6JF88H207038	5VDC6JFX8H207039	5VDC6JF68H207040
5VDC6JF88H207041	5VDC6JFX8H207042	5VDC6JF18H207043	5VDC6LEX8H207045

SERVICE PROGRAM

SP 8-662-001



July 2008

5VDC6LE18H207046	5VDC6LE38H207047	5VDC6LE58H207048	5VDC6LE78H207049
5VDC6LE38H207050	5VDC6LE58H207051	5VDC6LE78H207052	5VDC6LE98H207053
5VDC6LE08H207054	5VDC6LE28H207055	5VDC6LE48H207056	5VDC6LE68H207057
5VDC6LE88H207058	5VDC6LEX8H207059	5VDC6LE68H207060	5VDC6LE88H207061
5VDC6LEX8H207062	5VDC6LE18H207063	5VDC6LE38H207064	5VDC6JFX8H207073
5VDC6JF18H207074	5VDC6JF38H207075	5VDC6JF58H207076	5VDC6JF78H207077
5VDC6JF98H207078	5VDC6JF08H207079	5VDC6JF78H207080	5VDC6JF98H207081
5VDC6JF08H207082	5VDC6JF28H207083	5VDC6JF88H207086	5VDC6JFX8H207087
5VDC6JF18H207088	5VDC6JF38H207089	5VDC6JFX8H207090	5VDC6JF18H207091
5VDC6JF38H207092	5VDC6JF58H207093	5VDC6JF78H207094	5VDC6JF98H207095
5VDC6JF08H207096	5VDC6JF28H207097	5VDC6JF48H207098	5VDC6JF68H207099
5VDC6JF98H207100	5VDC6JF08H207101	5VDC6JF28H207102	5VDC6JF48H207103
5VDC6JF68H207104	5VDC6KFX8H207105	5VDC6KF18H207106	5VDC6KF38H207107
5VDC6KF58H207108	5VDC6KF78H207109	5VDC6KF38H207110	5VDC6KF58H207111
5VDC6KF78H207112	5VDC6KF98H207113	5VDC6KF08H207114	5VDC6KF28H207115
5VDC6KF48H207116	5VDC6KF68H207117	5VDC6KF88H207118	5VDC6JF88H207119
5VDC6JF48H207120	5VDC6JF68H207121	5VDC6JF88H207122	5VDC6JF98H207162
5VDC6JF08H207163	5VDC6JF28H207164	5VDC6JF48H207165	5VDC6JF68H207166
5VDC6JF58H207126	5VDC6JF78H207127	5VDC6JF98H207128	5VDC6JF08H207129
5VDC6JF78H207130	5VDC6JF98H207131	5VDC6JF08H207132	5VDC6JF88H207167
5VDC6JFX8H207168	5VDC6JF18H207169	5VDC6JF88H207170	5VDC6JFX8H207171
5VDC6JF18H207172	5VDC6JF48H207148	5VDC6JF68H207149	5VDC6JF28H207150
5VDC6JF48H207151	5VDC6JF18H207155	5VDC6JF38H207156	5VDC6JF58H207157
5VDC6JF78H207158	5VDC6JF98H207159	5VDC6LEX8H207174	5VDC6LE18H207175
5VDC6LE38H207176	5VDC6LE58H207177	5VDC6LE78H207178	5VDC6LE98H207179
5VDC6JF08H207180	5VDC6JF28H207181	5VDC6JF88H207184	5VDC6JFX8H207185
5VDC6JF18H207186	5VDC6JF38H207187	5VDC6JF58H207188	5VDC6JF78H207189
5VDC6JF88H207198	5VDC6JFX8H207199	5VDC6JF28H207200	5VDC6JF48H207201
5VDC6JF68H207202	5VCD36HE18H207203	5VDC6JFX8H207204	5VDC6LE68H207205
5VDC6LE88H207206	5VDC6JF58H207207	5VDC6JF78H207208	5VDC6KF08H207209
5VDC6KF78H207210	5VDC6KF98H207211	5VDC6KF08H207212	5VDC6KF28H207213
5VDC6KF48H207214	5VDC6KF68H207215	5VDC6KF88H207216	5VDC6KFX8H207217
5VDC6KF18H207218	5VDC6KF38H207219	5VDC6KFX8H207220	5VDC6KF18H207221
5VDC6KF38H207222	5VDC6LE88H207223	5VDC6LEX8H207224	5VDC6LE18H207225
5VDC6LE38H207226	5VDC6LE58H207227	5VDC6LE78H207228	5VDC6LE98H207229
5VDC6LE58H207230	5VDC6LE78H207231	5VDC6LE98H207232	5VDC6LE08H207233
5VDC6LE28H207234	5VDC6JFX8H207235	5VDC6JF38H207237	5VDC6JF58H207238
5VDC6JF78H207239	5VDC6JF38H207240	5VDC6JF58H207241	5VDC6JF78H207242
5VDC6JF98H207243	5VDC6JF08H207244	5VDC6JF28H207245	5VDC6JF48H207246
5VDC6JF68H207247	5VDC6JF88H207248	5VDC6JFX8H207249	5VDC6JF68H207250
5VDC6JF88H207251	5VDC6JFX8H207252	5VDC6JF58H207255	5VDC6JF78H207256
5VDC6JF98H207257	5VDC6JF08H207258	5VDC6JF28H207259	5VDC6JF98H207260
5VDC6LE08H207345	5VDC6LE58H207261	5VDC6LE78H207262	5VDC6LE98H207263
5VCD36HF98H207264	5VCD36HF08H207265	5VCD36HF28H207266	5VCD36HF48H207267

SERVICE PROGRAM

SP 8-662-001



July 2008

5VDC6JF38H207268	5VDC6JF58H207269	5VDC6JF18H207270	5VDC6JF38H207271
5VDC6KF78H207272	5VDC6KF98H207273	5VDC6JF98H207274	5VDC6JF08H207275
5VDC6JF28H207276	5VDC6JF48H207277	5VDC6JF68H207278	5VDC6JF88H207279
5VDC6JF48H207280	5VDC6JF68H207281	5VDC6JF88H207282	5VDC6JFX8H207283
5VDC6JF18H207284	5VDC6JF88H207296	5VDC6LE48H207297	5VDC6LE68H207298
5VDC6LE88H207299	5VDC6LE08H207300	5VDC6LE28H207301	5VDC6LE48H207302
5VDC6LE68H207303	5VDC6KF58H207318	5VDC6KF78H207319	5VDC6KF38H207320
5VCD36LE88H207304	5VCD36HF88H207305	5VDC6JF18H207317	5VDC6JF38H207321
5VDC6JF58H207322	5VDC6JF78H207323	5VDC6JF98H207324	5VDC6JF08H207325
5VDC6JF28H207326	5VDC6KFX8H207329	5VDC6KF68H207330	5VDC6KF88H207331
5VDC6KFX8H207332	5VDC6KF18H207333	5VDC6KF38H207334	5VDC6KF58H207335
5VDC6KF78H207336	5VDC6KFX8H207346	5VDC6KF98H207337	5VDC6KF08H207338
5VDC6KF28H207339	5VDC6KF98H207340	5VDC6KF08H207341	5VDC6KF28H207342
5VDC6KF48H207343	5VDC6KF68H207344	5VDC6KF58H207349	5VDC6KF18H207350
5VDC6KF38H207351	5VDC6KF78H207353	5VDC6KF98H207354	5VDC6KF08H207355
5VDC6KF28H207356	5VDC6KF48H207357	5VDC6KF68H207358	5VDC6KF88H207359
5VDC6KF48H207360	5VDC6KF68H207361	5VDC6KF08H207369	5VDC6KF78H207403
5VDC6KF98H207404	5VDC6KF08H207405	5VDC6KE38H207406	5VDC6KE58H207407
5VDC6KE78H207408	5VDC6KE98H207409	5VDC6KE58H207410	5VDC6KF68H207411
5VDC6JF18H207429	5VDC6JF08H207437	5VDC6JF88H207430	5VDC6KF88H207443
5VDC6KFX8H207444	5VDC6JFX8H207462	5VDC6JF18H207463	5VDC6JF38H207464
5VDC6JF58H207465	5VDC6LE18H207466	5VDC6LE38H207467	5VDC6LE58H207468
5VDC6LE78H207469	5VDC6LE38H207470	5VDC6LE58H207471	5VDC6LE78H207472
5VDC6LE98H207473	5VDC6LE08H207474	5VDC6LE28H207475	5VDC6LE48H207476
5VDC6LE68H207477	5VDC6LE88H207481	5VDC6LEX8H207482	5VDC6LE18H207483
5VDC6LE38H207484	5VDC6LE58H207485	5VDC6LE78H207486	5VDC6KF68H207487
5VDC6LE08H207488	5VDC6LE28H207489	5VDC6LE98H207490	5VDC6LE08H207491
5VDC6LE28H207492	5VDC6LE48H207493	5VDC6LE68H207494	5VDC6LE88H207495
5VDC6LEX8H207496	5VDC6LE18H207497	5VDC6LE38H207498	5VDC6LE58H207499
5VDC6JF38H207500	5VDC6JF58H207501	5VDC6JF78H207502	5VDC6JF98H207503
5VDC6JF08H207504	5VDC6JF28H207505	5VDC6JF48H207506	5VDC6JF68H207507
5VDC6JF88H207508	5VDC6JFX8H207509	5VDC6JF68H207510	5VDC6JF88H207511
5VDC6JFX8H207512	5VDC6JF18H207513	5VDC6JF38H207514	5VDC6JF58H207515
5VDC6JF78H207516	5VDC6JF98H207517	5VDC6JF08H207518	5VDC6JF28H207519
5VDC6JF98H207520	5VDC6JF08H207521	5VDC6JF28H207522	5VDC6JF48H207523
5VDC6JF68H207524	5VDC6JF88H207525	5VDC6JFX8H207526	5VCD36HE58H207527
5VDC6KF38H207530	5VDC6JF28H207536	5VDC6KF68H207537	5VDC6KE28H207557
5VDC6KE48H207558	5VDC6KF28H207566	5VDC6KF48H207567	5VDC6KF68H207568
5VDC6KF88H207569	5VDC6KF48H207570	5VDC6KF68H207571	5VDC6KF88H207572
5VDC6KFX8H207573	5VDC6KF18H207574	5VDC6KF78H207577	5VDC6KF98H207578
5VDC6KF08H207579	5VDC6KF88H207586	5VDC6KFX8H207587	5VDC6KF18H207588
5VDC6KF38H207589	5VCD36LE48H207607	5VDC6JF18H207611	5VDC6LE88H207612
5VDC6LEX8H207613	5VDC6LE18H207614	5VDC6LE38H207615	5VDC6LE58H207616
5VDC6LE78H207617	5VDC6LE98H207618	5VDC6LE08H207619	5VDC6LE78H207620

SERVICE PROGRAM

SP 8-662-001



July 2008

5VDC6LE98H207621	5VDC6LE08H207622	5VDC6LEX8H207627	5VDC6LE28H207623
5VDC6LE48H207624	5VDC6LE68H207625	5VDC6LE88H207626	5VDC6JF78H207628
5VDC6JF98H207629	5VDC6KF78H207630	5VDC6HE29H207633	5VDC6HE49H207634
5VDC6HE69H207635	5VDC6HE89H207636	5VDC6HEX9H207637	5VDC6HE69H207652
5VDC6LE99H207653	5VDC6LE09H207654	5VDC6LE89H207658	5VCD36HE89H207667
5VDC6JF59H207693	5VDC6KG79H207704	5VDC6KG99H207705	5VDC6KG09H207706
5VDC6KFX9H207736	5VDC6KF19H207737	5VDC6KF39H207738	5VDC6KF59H207739
5VDC6KF19H207740	5VDC6KF39H207741	5VDC6KF59H207742	5VDC6KF29H207746
5VCD36LE79H207747	5VDC6KF69H207748	5VDC6HEX9H207749	5VDC6KF39H207755
5VDC6KF59H207756	5VDC6KF79H207757	5VDC6KF99H207758	5VDC6KF09H207759
5VDC6KF79H207760	5VDC6KF99H207761	5VDC6KF09H207762	5VDC6KF49H207764
5VDC6KF69H207765	5VDC6KF89H207766	5VDC6KFX9H207767	5VDC6KF19H207768
5VDC6KF39H207769	5VDC6KFX9H207770	5VDC6KH39H207773	5VDC6KH59H207774
5VDC6KH79H207775	5VDC6KH99H207776	5VDC6KH09H207777	5VDC6KF69H207779
5VDC6KF29H207780	5VDC6JF19H207786	5VDC6JF39H207787	5VDC6JF59H207788
5VDC6JF69H207797	5VDC6KF99H207811	5VDC6KF09H207812	5VDC6KF89H207833
5VDC6KF59H207837	5VDC6KF39H207898	5VDC6KF59H207899	5VDC6KF89H207900
5VDC6KFX9H207901	5VDC6JF79H207999	5VDC6JF89H208000	5VDC6JFX9H208001
5VDC6HE59H208002	5VDC6HE79H208003	5VDC6HE99H208004	5VDC6HE09H208005
5VDC6HE19H208014	5VDC6KF29H208024	5VDC6KF49H208025	5VDC6KF69H208026
5VDC6KF89H208027	5VDC6KFX9H208028	5VDC6KF19H208029	5VDC6LEX9H208035
5VCD36JF39H207644	5VCD36JF59H207645	5VCD36JF79H207646	5VCD36JF99H207647
5VCD36JF09H207648	5VCD36JF29H207649	5VDC6KE49H207707	5VDC6KE69H207708
5VDC6KE89H207709	5VDC6KE49H207710	5VDC6KE69H207711	5VDC6KE89H207712
5VDC6KEX9H207713	5VDC6KE19H207714	5VDC6KE39H207715	5VDC6KE59H207716
5VDC6KE79H207717	5VDC6KE99H207718	5VDC6KE09H207719	5VDC6KE79H207720
5VDC6KE99H207721	5VDC6KE09H207722	5VDC6KE29H207723	5VDC6KE49H207724
5VDC6KE69H207725	5VDC6KE89H207726	5VDC6KEX9H207727	5VDC6KE19H207728
5VDC6KE39H207729	5VDC6KEX9H207730	5VDC6KE19H207731	5VDC6KE39H207732
5VDC6KE79H207734	5VDC6KE99H207735	5VDC6LEX9H207810	5VDC6KFX9H207834
5VDC6KF19H207835	5VDC6KF39H207836	5VDC6KF79H207838	5VDC6KF99H207839
5VDC6KF59H207840	5VDC6LE49H207849	5VDC6LE09H207850	5VDC6LE29H207851
5VDC6LE49H207852	5VDC6LE69H207853	5VDC6LE89H207854	5VDC6LEX9H207855
5VDC6KF99H207856	5VDC6KF59H207868	5VDC6KF79H207869	5VDC6KF39H207870
5VDC6KF59H207871	5VDC6KF79H207872	5VDC6KF99H207873	5VDC6KF09H207874
5VDC6KF29H207875	5VDC6KF49H207876	5VDC6KF69H207877	5VDC6KF89H207878
5VDC6KFX9H207879	5VDC6HE69H207893	5VDC6HE89H207894	5VDC6HEX9H207895
5VDC6HE19H207896	5VDC6HE39H207897	5VDC6KF19H207902	5VDC6JF19H207903
5VDC6JF39H207904	5VDC6KF99H207906	5VDC6KF09H207907	5VDC6JF49H207913
5VDC6JF69H207914	5VDC6JF89H207915	5VDC6HE19H207929	5VDC6HE89H207930
5VDC6KH69H207931	5VDC6HE19H207932	5VDC6HE39H207933	5VDC6HE59H207934
5VDC6HE79H207935	5VDC6HE99H207936	5VDC6HE09H207937	5VDC6HE29H207938
5VDC6KGX9H207941	5VDC6HE49H207942	5VDC6HE69H207943	5VDC6HE89H207944
5VDC6JFX9H207950	5VDC6JF19H207951	5VDC6JF39H207952	5VDC6LEX9H207953

SERVICE PROGRAM

SP 8-662-001



July 2008

5VDC6LE19H207954	5VDC6LE39H207955	5VDC6LE59H207956	5VDC6LE79H207957
5VDC6LE99H207958	5VDC6LE09H207959	5VDC6LE79H207960	5VDC6LE99H207961
5VDC6LE09H207962	5VDC6KFX9H207963	5VDC6KF19H207964	5VDC6KF39H207965
5VDC6KF59H207966	5VDC6HE99H207967	5VDC6LE59H207973	5VDC6LE79H207974
5VDC6KF69H207975	5VDC6KF89H207976	5VDC6KFX9H207977	5VDC6KF19H207978
5VDC6KF59H207983	5VDC6KF79H207984	5VDC6KF99H207985	5VDC6KF09H207986
5VDC6JF59H208018	5VDC6JF69H208030	5VDC6LE19H208036	5VDC6LE39H208037
5VDC6LE59H208038	5VDC6LE79H208039	5VDC6LE39H208040	5VDC6LE59H208041
5VDC6LE79H208042	5VDC6LE99H208043	5VDC6LE09H208044	5VDC6LE29H208045
5VDC6LE49H208046	5VDC6JF19H208047	5VDC6LE89H208048	5VDC6KF79H208049
5VDC6JF89H208059	5VDC6JF19H208081	5VDC6JF39H208082	5VDC6JF59H208083
5VDC6JF79H208084	5VDC6JF99H208085	5VDC6JF09H208086	5VDC6JF29H208087
5VDC6JF49H208088	5VDC6JF69H208089	5VDC6JF29H208090	5VDC6JF49H208060
5VDC6JF69H208061	5VDC6JF89H208062	5VDC6JFX9H208063	5VDC6JF19H208064
5VDC6JF39H208065	5VDC6JF59H208066	5VDC6JF79H208067	5VDC6JF99H208068
5VDC6JF09H208069	5VDC6JF79H208070	5VDC6JF99H208071	5VDC6JF09H208072
5VDC6JF29H208073	5VDC6JF49H208074	5VDC6JF69H208075	5VDC6JF89H208076
5VDC6JFX9H208077	5VDC6JF19H208078	5VDC6JF39H208079	5VDC6JF39H208101
5VDC6JF59H208102	5VDC6LE99H208107	5VDC6LE09H208108	5VDC6LE29H208109
5VDC6LE99H208110	5VDC6LE09H208111	5VDC6LE29H208112	5VDC6LE49H208113
5VDC6LE69H208114	5VDC6LE89H208115	5VDC6JF89H208126	5VDC6HEX9H208142
5VDC6KE09H208143	5VDC6LE49H208144	5VDC6JF19H208145	5VDC6JF39H208146
5VDC6JF59H208147	5VDC6JF79H208148	5VDC6JF99H208149	5VDC6JF59H208150
5VDC6JF79H208151	5VDC6JF49H208172	5VDC6JF69H208173	5VDC6JF89H208174
5VDC6JFX9H208175	5VDC6JF19H208176	5VDC6JF39H208177	5VDC6JF59H208178
5VDC6JF79H208179	5VDC6JF39H208180	5VDC6JF59H208181	5VDC6JF69H208156
5VDC6JF89H208157	5VDC6JFX9H208158	5VDC6JF19H208159	5VDC6JF89H208160
5VDC6JFX9H208161	5VDC6JF19H208162	5VDC6JF39H208163	5VDC6JF59H208164
5VDC6JF79H208165	5VDC6JF99H208166	5VDC6JF09H208167	5VDC6JF29H208168
5VDC6JF49H208169	5VDC6KF29H208170	5VDC6KF49H208171	5VDC6KF09H208183
5VDC6KF69H208186	5VDC6KF89H208187	5VDC6KFX9H208188	5VDC6KF19H208189
5VDC6KF89H208190	5VDC6KFX9H208191	5VDC6KF19H208192	5VDC6KF39H208193
5VDC6KF59H208194	5VDC6KF79H208195	5VDC6JF28H208184	5VDC6JF48H208185
5VDC6JF29H208204	5VDC6KF69H208205	5VDC6JF89H208336	5VDC6JFX9H208337
5VDC6JF39H208339	5VDC6JF69H208352	5VDC6JF89H208353	5VDC6HE39H208354
5VDC6JF19H208355	5VDC6JF39H208356	5VDC6JF59H208357	5VDC6JF79H208358
5VDC6JF99H208359	5VDC6JF59H208360	5VDC6JF29H208378	5VDC6KF89H208383
5VDC6KFX9H208384	5VDC6KF19H208385	5VDC6KE47H204528	