



Autocar Parts Special Update

PARTS BULLETIN

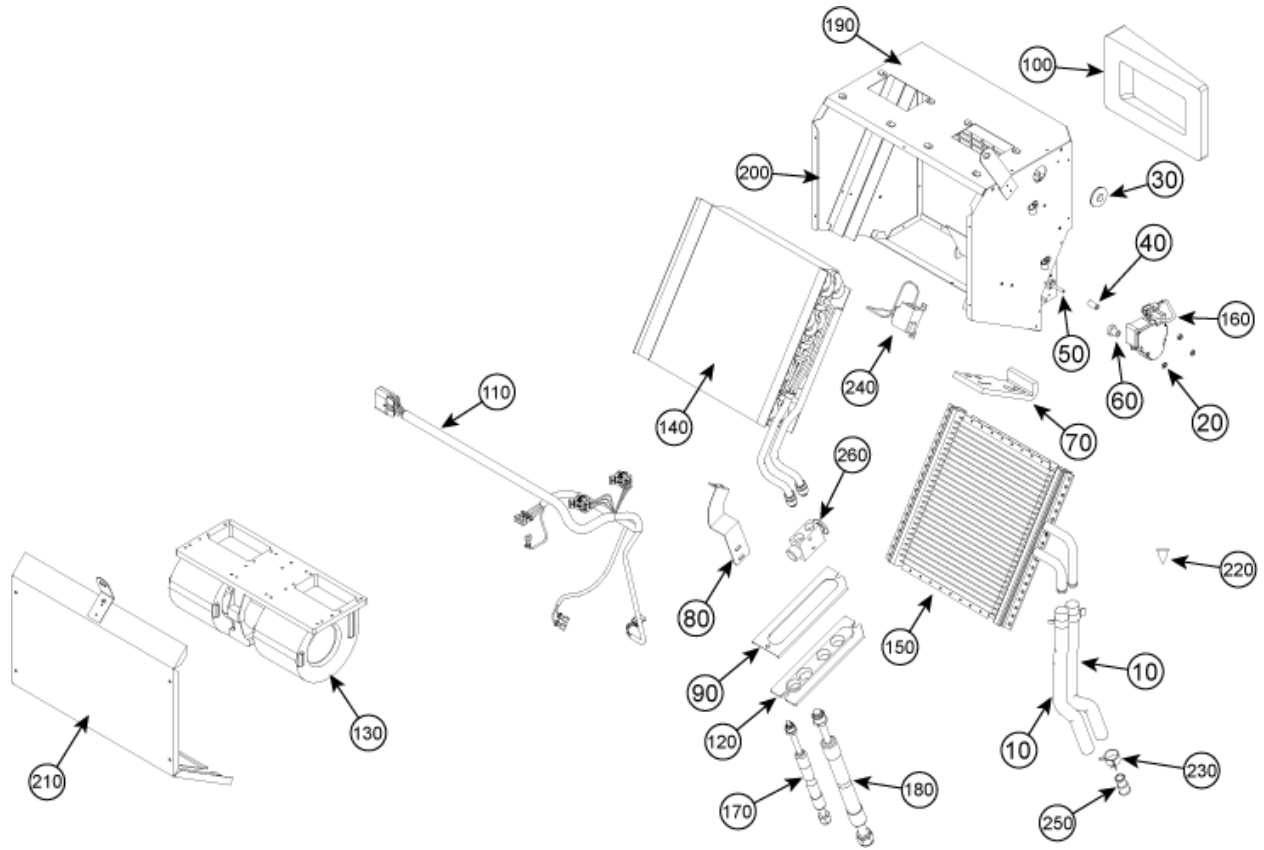
*JULY 18 2006

IN THIS ISSUE:

1. TRUCKS WITH EVANS CLIMATE CONTROL UNITS AND HOSE INFORMATION

1. EVANS CLIMATE UNITS AND HOSES

AUTOCAR TRUCKS BUILT WITH THE NEW EVANS CLIMATE CONTROL INCLUDE AS PART OF THE CLIMATE ASSEMBLY THE # 6 AND # 12 SIZE HOSES THAT RUNS FROM THE CLIMATE UNIT EVAPORATOR TO THE CHASSIS. THE EVANS UNIT IS STANDARD IN ALL 05 INTERIOR (SALES CODE 1130002) WX AND WXR TRUCKS. THESE HOSES ARE USUALLY FOUND IN THE 615 MODULE FOR BERGSTROM CLIMATE UNITS. IF YOU REQUIRE REPLACEMENT OF ONE OF THESE HOSES, DO NOT LOOK AT THE 615 BILL OF MATERIAL LOADED TO YOUR TRUCK ON THE EPC. INSTEAD, GO TO THE 600 MODULE AND LOOK AT THE ASSEMBLY BREAKDOWN OF THE EVANS UNIT. AN ILLUSTRATION IS PROVIDED ON THE NEXT PAGE.



CALLOUTS 170 AND 180 ARE THE HOSES WHICH RUN FROM THE CAB TO THE CHASSIS. PLEASE REFERENCE THE 600 BOM AND THE BREAKDOWN OF THE CLIMATE UNIT WHEN ORDERING THESE PARTS. ALL OTHER HOSES CAN BE FOUND IN THE 615 BOM.